



January 7, 2014

Dear Chapter Presidents, Chapter Advisors, Faculty Advisors, & Headquarters Staff:

This letter contains information regarding the Fall 2013 academic report for all fraternities and sororities at George Mason University (Mason). Please take time to review your chapter's information and contact our office with any questions.

We would like to take this opportunity to congratulate the top three sororities and fraternities with the highest Grade Point Average (GPA) during the 2013 Fall Semester.

Sororities: Alpha Kappa Alpha (3.24), Chi Omega (3.12), Pi Beta Phi (3.10)
Fraternities: Chi Psi (3.10), Alpha Epsilon Pi (3.05), Sigma Alpha Epsilon (2.99)

In addition, during the 2013 fall semester almost 22% of our Greek Men and Women made the Dean List having received at minimum a 3.5 Term GPA. We are very proud of our community scholars but realize that there is still room for improvement regarding our community's overall academic performance. Below is the general academic information for our FSL community and Overall Mason Community.

All-Greek:	2.89	All-Sorority:	3.01	All-Fraternity:	2.72
All-Undergraduate:	2.95	All-Female:	3.06	All-Male:	2.84

George Mason University recognizes the importance that scholastic achievement plays in the success of a chapter. This semester we implemented our new academic policy and so all chapters were asked to maintain a 2.5 term GPA and we are happy to say that 83% of our chapters met our standard. Those that did not will have to meet with our office to develop a scholarship action plan and will also lose social privileges for the following semester.

In closing, Mason has a wide array of resources available to chapters and members of the Fraternity and Sorority Community. If you have a successful academic program that you would like to share with our community or are looking to get tips on how to increase your chapter's GPA, please stop by. If you have questions or concerns about any information listed in this report don't hesitate to contact us at (703) 993-2909 to set up an appointment to discuss your chapter's needs or concerns.

Interfraternally,

Phil McDaniel
Associate Director
pmcdanie@gmu.edu

Allen White
Assistant Director
awhite18@gmu.edu

Nancy Schwartz
Graduate Assistant
nschwar4@masonlive.gmu.edu

MGC • PHC • NPHC • IFC

George Mason University
FRATERNITY & SORORITY *Life*
 LEADERSHIP • FRIENDSHIP • COMMUNITY • SERVICE

Fall 2013 Scholarship Overview

Campus Information:

All Undergraduate Campus GPA:	2.95	All Greek GPA:	2.89
All Undergraduate Men's GPA:	2.84	All Fraternity GPA:	2.72
All Undergraduate Women's GPA:	3.06	All Sorority GPA:	3.01

Council Information:

Interfraternity Council	2.73
Multicultural Greek Council	2.76
National Pan-Hellenic Council	2.83
Panhellenic Council	3.03

New Member Information:

All Greek:	2.84
All Sorority:	2.97
All Fraternity:	2.59

Active Information:

All Greek:	2.92
All Sorority:	3.04
All Fraternity:	2.78

George Mason Office of Fraternity & Sorority Life

Office: 703.993.2909

Fax: 703.993.4566

www.si.gmu.edu/greek-life/

All (active and new member) Greek GPA Rankings Fall 2013

All Greek						
	Council	Chapter Size		Organization	GPA	Prev. Rank
1	NPHC	24	S	Alpha Kappa Alpha	3.24	11
2	PHC	122	S	Chi Omega	3.12	1
3	IFC	24	F	Chi Psi	3.10	27
4	PHC	114	S	Pi Beta Phi	3.10	n/a
5	PHC	132	S	Zeta Tau Alpha	3.09	4
6	MGC	5	S	Lambda Pi Chi	3.06	8
7	IFC	12	F	Alpha Epsilon Pi	3.05	9
8	PHC	123	S	Alpha Omicron Pi	3.05	13
9	MGC	5	S	Delta Phi Omega	3.04	2
10	PHC	109	S	Alpha Xi Delta	3.00	6
11	IFC	54	F	Sigma Alpha Epsilon	2.99	3
12	PHC	136	S	Alpha Phi	2.94	5
13	MGC	4	S	Kappa Phi Gamma	2.93	33
14	PHC	123	S	Gamma Phi Beta	2.90	7
15	NPHC	8	S	Zeta Phi Beta	2.88	21
16	IFC	27	F	Theta Chi	2.87	31
17	MGC	4	S	Chi Upsilon Sigma	2.83	**
18	IFC	67	F	Phi Kappa Sigma	2.82	10
19	NPHC	6	F	Omega Psi Phi	2.80	24
20	IFC	97	F	Kappa Sigma	2.79	14
21	IFC	38	F	Kappa Alpha	2.78	19
22	MGC	19	F	Pi Delta Psi	2.76	26
23	IFC	66	F	Phi Sigma Kappa	2.74	15
24	MGC	24	S	Kappa Phi Lambda	2.74	12
25	IFC	88	F	Pi Kappa Alpha	2.71	18
26	IFC	36	F	Pi Kappa Phi	2.70	20
27	MGC	3	F	Lambda Theta Phi	2.66	22
28	NPHC	7	F	Phi Beta Sigma	2.66	30
29	MGC	17	S	Lambda Theta Alpha	2.61	16
30	NPHC	5	F	Alpha Phi Alpha	2.53	23
31	IFC	62	F	Tau Kappa Epsilon	2.50	17
32	IFC	22	F	Phi Kappa Theta	2.38	29
33	IFC	37	F	Delta Chi	2.36	28
34	NPHC	7	F	Kappa Alpha Psi	2.36	32
35	IFC	14	F	Alpha Kappa Lambda	2.17	25
36	NPHC	2	S	Sigma Gamma Rho	1.06	34
37	MGC	1	F	Lambda Upsilon Lambda	N/A	**
Totals:					2.89	

All Sorority				
	Council	Organization	GPA	Prev. Rank
1	NPHC	Alpha Kappa Alpha	3.24	8
2	PHC	Chi Omega	3.12	1
3	PHC	Pi Beta Phi	3.10	n/a
4	PHC	Zeta Tau Alpha	3.09	3
5	MGC	Lambda Pi Chi	3.06	7
6	PHC	Alpha Omicron Pi	3.05	10
7	MGC	Delta Phi Omega	3.04	2
8	PHC	Alpha Xi Delta	3.00	5
9	PHC	Alpha Phi	2.94	4
10	MGC	Kappa Phi Gamma	2.93	13
11	PHC	Gamma Phi Beta	2.90	6
12	NPHC	Zeta Phi Beta	2.88	12
13	MGC	Chi Upsilon Sigma	2.83	n/a
14	MGC	Kappa Phi Lambda	2.74	9
15	MGC	Lambda Theta Alpha	2.61	11
16	NPHC	Sigma Gamma Rho	1.06	14

Totals:

3.01

All Fraternity				
	Council	Organization	GPA	Prev. Rank
1	IFC	Chi Psi	3.10	15
2	IFC	Alpha Epsilon Pi	3.05	2
3	IFC	Sigma Alpha Epsilon	2.99	1
4	IFC	Theta Chi	2.87	19
5	IFC	Phi Kappa Sigma	2.82	3
6	NPHC	Omega Psi Phi	2.80	12
7	IFC	Kappa Sigma	2.79	4
8	IFC	Kappa Alpha	2.78	8
9	MGC	Pi Delta Psi	2.76	14
10	IFC	Phi Sigma Kappa	2.74	5
11	IFC	Pi Kappa Alpha	2.71	7
12	IFC	Pi Kappa Phi	2.70	9
13	MGC	Lambda Theta Phi	2.66	10
14	NPHC	Phi Beta Sigma	2.66	18
15	NPHC	Alpha Phi Alpha	2.53	11
16	IFC	Tau Kappa Epsilon	2.50	6
17	IFC	Phi Kappa Theta	2.38	17
18	IFC	Delta Chi	2.36	16
19	NPHC	Kappa Alpha Psi	2.36	20
20	IFC	Alpha Kappa Lambda	2.17	13
**	MGC	Lambda Upsilon Lambda	N/A	n/a

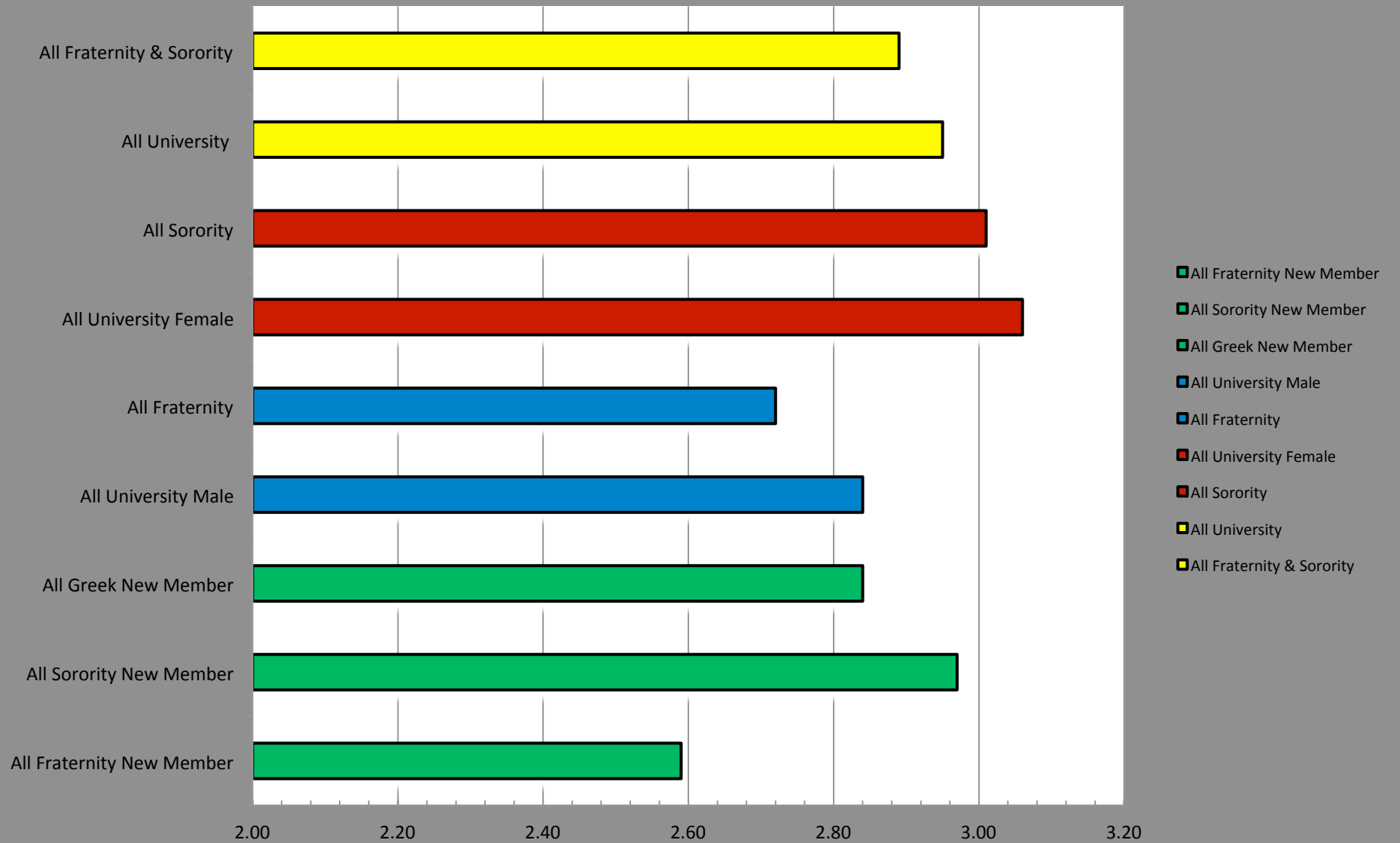
Totals:

2.72

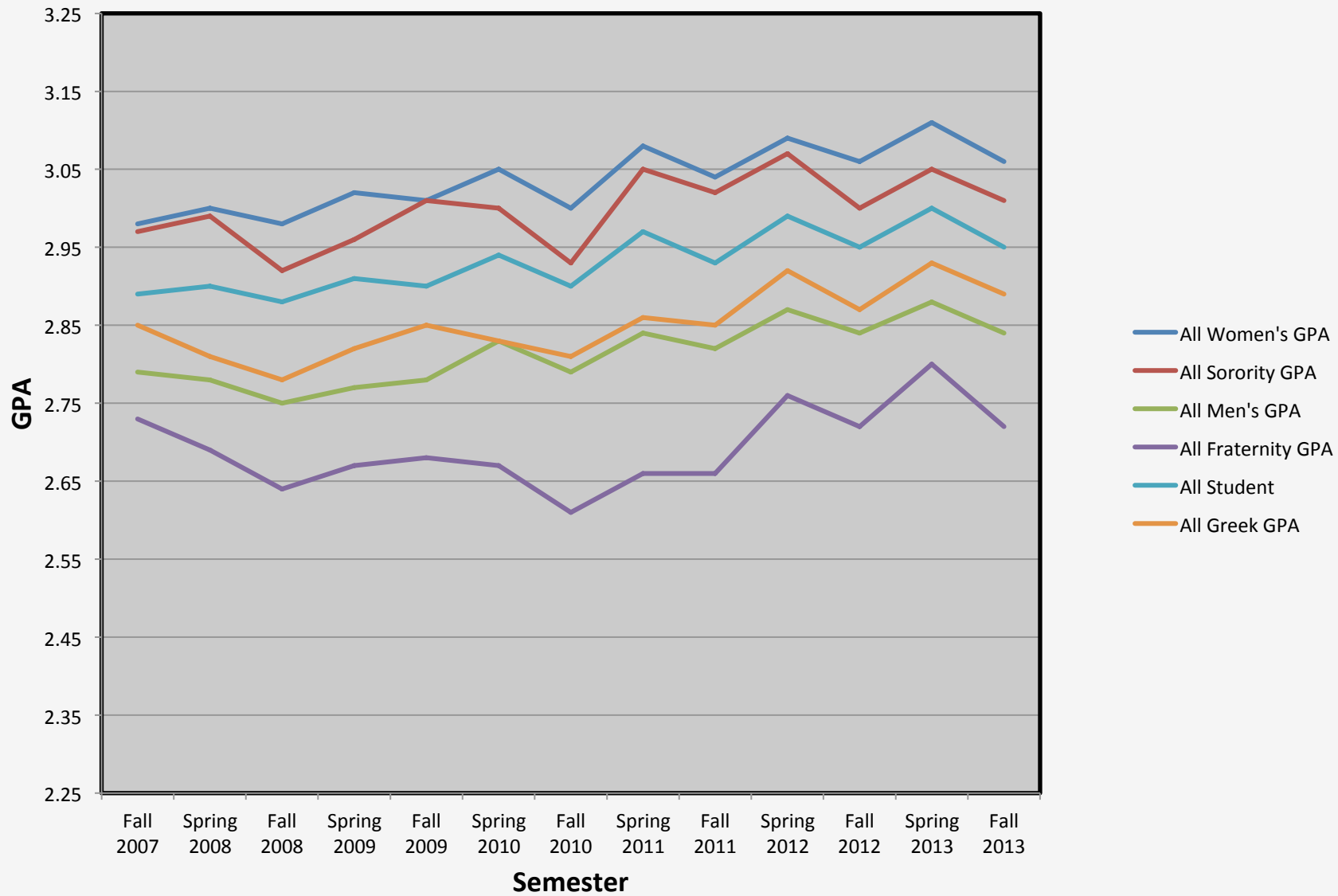
George Mason University
Fraternity/Sorority Life Council Grades
Fall 2013

Rank	IFC	New Member	Active	Total GPA	Prev. Rank
1	Chi Psi	3.26	2.90	3.10	11
2	Alpha Epsilon Pi	2.67	3.19	3.05	2
3	Sigma Alpha Epsilon	2.65	3.08	2.99	1
4	Theta Chi	2.78	2.89	2.87	14
5	Phi Kappa Sigma	2.59	2.89	2.82	3
6	Kappa Sigma	2.68	2.82	2.79	4
7	Kappa Alpha	2.70	2.82	2.78	8
8	Phi Sigma Kappa	2.56	2.85	2.74	5
9	Pi Kappa Alpha	2.76	2.67	2.71	7
10	Pi Kappa Phi	2.31	2.84	2.70	9
11	Tau Kappa Epsilon	2.10	2.74	2.50	6
12	Phi Kappa Theta	2.15	2.43	2.38	13
13	Delta Chi	2.39	2.32	2.36	12
14	Alpha Kappa Lambda	**	2.34	2.17	10
	Avg. IFC GPA	2.58	2.8	2.73	
Rank	Panhellenic	New Member	Active	Total GPA	Prev. Rank
1	Chi Omega	3.07	3.15	3.12	1
2	Pi Beta Phi	3.10	n/a	3.10	n/a
3	Zeta Tau Alpha	N/A	3.09	3.09	2
4	Alpha Omicron Pi	3.01	3.07	3.05	6
5	Alpha Xi Delta	2.89	3.07	3.00	4
6	Alpha Phi	2.85	2.99	2.94	3
7	Gamma Phi Beta	2.86	2.92	2.90	5
	Avg. Pan. GPA	2.98	3.07	3.03	
Rank	NPHC	New Member	Active	Total GPA	Prev. Rank
1	Alpha Kappa Alpha	3.24	3.23	3.24	1
2	Zeta Phi Beta	N/A	2.88	2.88	2
3	Omega Psi Phi	N/A	2.80	2.80	4
4	Phi Beta Sigma	N/A	2.66	2.66	5
5	Alpha Phi Alpha	N/A	2.53	2.53	3
6	Kappa Alpha Psi	N/A	2.36	2.36	6
7	Sigma Gamma Rho	N/A	1.06	1.06	7
	Avg. NPHC GPA	3.24	2.75	2.83	
Rank	MGC	New Member	Active	Total GPA	Prev. Rank
1	Lambda Pi Chi	3.06	**	3.06	2
2	Delta Phi Omega	**	2.90	3.04	1
3	Kappa Phi Gamma	N/A	2.93	2.93	7
4	Chi Upsilon Sigma	2.76	**	2.83	N/A
5	Pi Delta Psi	2.84	2.72	2.76	6
6	Kappa Phi Lambda	2.58	2.84	2.74	3
7	Lambda Theta Phi	**	2.52	2.66	5
8	Lambda Theta Alpha	2.37	2.69	2.61	4
9	Lambda Upsilon Lambda	**	**	**	N/A
	Avg. MGC GPA	2.74	2.76	2.76	

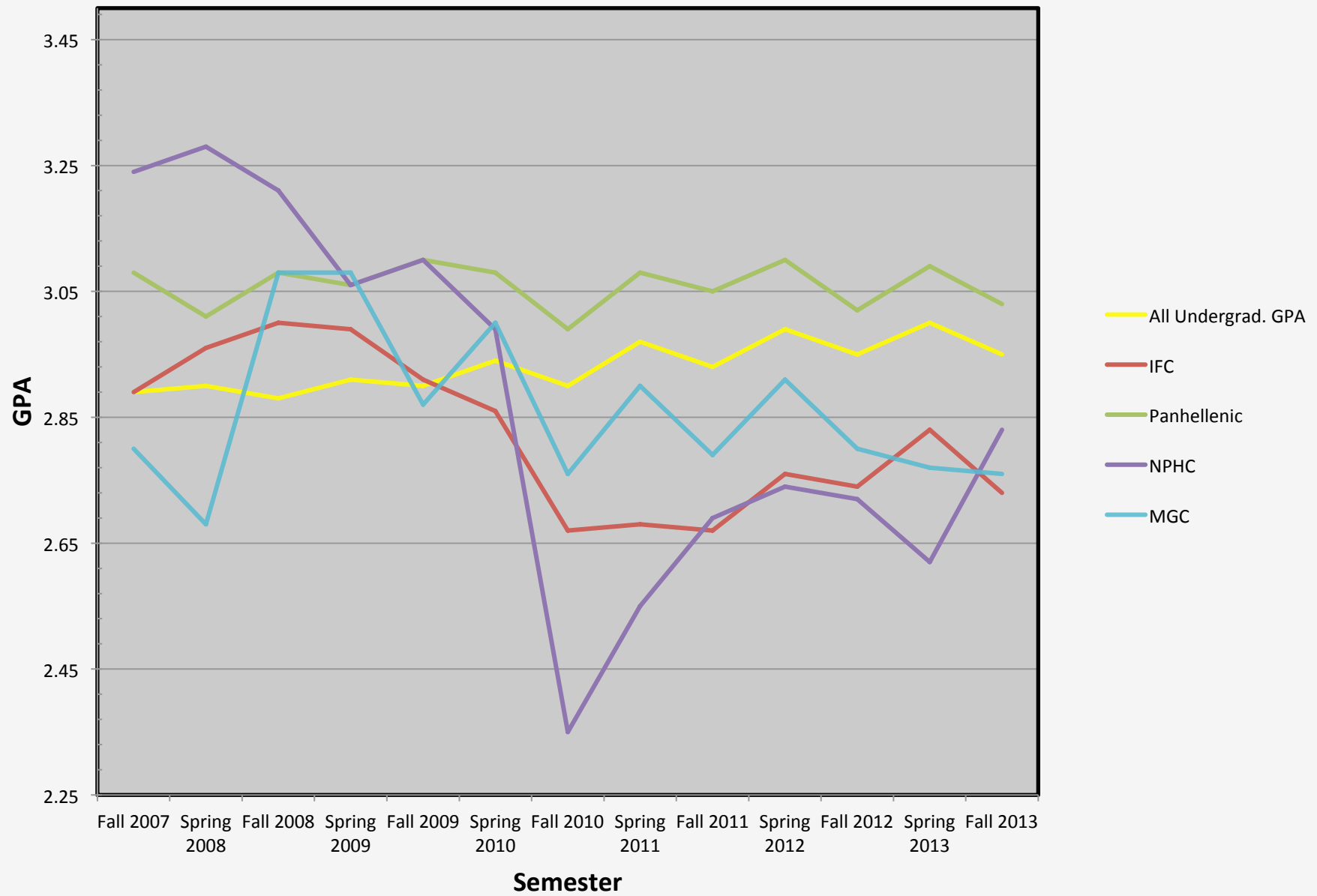
Fall 2013



Greek Gender Progression



Greek Council Progression





Fraternity and Sorority Life Academic Policy

Academic Requirements:

In an effort to better emphasize the academic focus and mission of both the University and the fraternity and sorority community, the following minimum chapter academic standards were developed by Fraternity & Sorority Life.

All chapters below the all-male or all-female GPA must meet with Fraternity & Sorority Life to review their current academic programs and formulate ideas on how to make adjustments/improvement to their scholarship program.

Minimum Chapter Academic Standing:

- 2.50 semester chapter GPA (chapter defined as actives and new members combined)
- Failure to maintain the minimum GPA will result in the chapter being placed in Poor Standing with Fraternity & Sorority Life for all campus and Inter/National reporting and the following will result

Failure to achieve minimum chapter academic standards will result in the following:

1st Semester:

- The chapter may **NOT** host/co-sponsor **ANY** social event (defined as date parties, mixers, formals, semi-formals, Parties or any event with alcohol) for the following semester.
- The chapter leadership (president and scholarship chairman) will schedule a meeting with the appropriate FSL advisor to outline a scholarship action plan.
- Additional sanctions as outlined in the councils' scholarship policy may also apply.

2nd Consecutive Semester:

- The chapter may **NOT** host/co-sponsor **ANY** social event (defined as date parties, mixers, formals, semi-formals, Parties or any event with alcohol) for the following semester.
- The chapter leadership (president and scholarship chairman) will schedule a meeting (by phone) with the appropriate FSL advisor AND a representative from the regional or inter/national office to discuss the chapter academic performance.
- The chapter will not be allowed to participate in Homecoming events or Greek Week the following semester (whichever is appropriate).
- All chapter programs will need to be approved by Fraternity & Sorority Life. A full calendar of events will be submitted by the 10th business day of the following semester.
 - Could result in chapter not participating in certain large-scale university events (Greek Week, Homecoming, Patriots Day, etc.) as determined by FSL and Chapter Advisors
- Additional sanctions as outlined in the councils' scholarship policy may also apply.

3rd Consecutive Semester:

- The chapter will lose all university recognition. The chapter will have no rights or privileges of being a registered student organization.
 - In order to apply for re-recognition, a chapter's GPA must be at or above the minimum 2.5. They must submit a written request for re-recognition to the Associate Director for Fraternity and Sorority Life. The request must include a thorough academic plan. Upon reviewing the materials, the officers of the organization will meet with the Associate Director for Fraternity & Sorority Life.

Fraternity and Sorority Life Leadership Positions :

(Governing Council officers and other FSL Office positions)

All members in a Fraternity and Sorority Life Leadership position must achieve a 2.5 cumulative GPA & term GPA, and must maintain these standards throughout their term. Member who's cumulative and/or term GPA drops below a 2.5 while in office will forfeit any and all positions held. Once a member's GPA falls below the required 2.5 cumulative and/or term GPA Fraternity & Sorority Life will notify the student in writing; thus the student will have 5 business days from the date of the letter to resign his/her position.

Governing Council Academic Recommendations:

In addition to these academic requirements, it is strongly advised that each governing council develop, implement, and enforce a substantial academic scholarship plan and/or policy which should, at minimum include the following:

- General purpose statement on academic achievement
- A short and/or long term plan which addresses minimum academic standards (specific to each council)
- An outline of council specific awards/incentives for chapters that exceed the minimum standards
- An outline of council specific sanctions/interventions for chapters not meeting the minimum standards
- A list of resources available to both the chapter, as well as individual members

Notes

1. Fraternity & Sorority Life will make the final determination of what activities are deemed as "social" in reference to this policy.